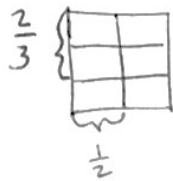


Name Jacqueline

Date _____

1) Lila collected the honey from 3 of her beehives. From the first hive she only collected $\frac{2}{3}$ gallon of honey. The last two hives yielded $\frac{1}{4}$ gallon each.

a) How many gallons of honey did Lila collect in all? Draw a diagram to support your answer.

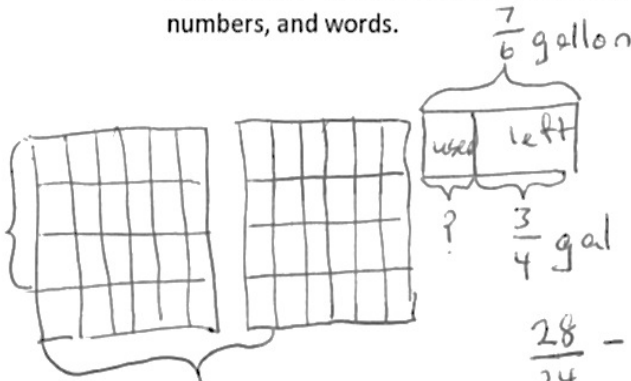


$$\frac{1}{4} + \frac{1}{4} = \frac{1}{2}$$

$$\frac{1}{2} + \frac{2}{3} = \frac{3}{6} + \frac{4}{6} = \frac{7}{6}$$

Lila collected $\frac{7}{6}$ gallons in all.

b) After using some of the honey she collected for baking, Lila found that she only had $\frac{3}{4}$ gallon of honey left. How much honey did she use for baking? Explain your answer using a diagram, numbers, and words.

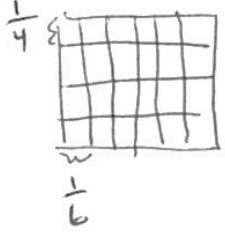


Lila used $\frac{10}{24}$ gal for baking.

$$\frac{28}{24} - \frac{18}{24} = \frac{10}{24}$$

- c) With the remaining $\frac{3}{4}$ gallon of honey, Lila decided to bake some loaves of bread and several batches of cookies for her school bake sale. The bread needed $\frac{1}{6}$ gallon of honey and the cookies needed $\frac{1}{4}$ gallon. How much honey was left over? Explain your answer using a diagram, numbers, and words.

$$\frac{3}{4} - \left(\frac{1}{6} + \frac{1}{4} \right) = \frac{3}{4} - \frac{10}{24}$$

$$\frac{1}{6} + \frac{1}{4} = \frac{4}{24} + \frac{6}{24} = \frac{10}{24}$$


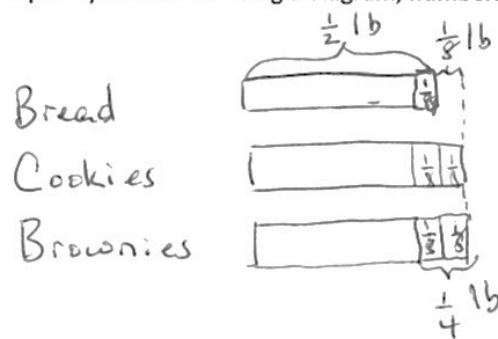
$$= \frac{18}{24} - \frac{10}{24}$$

$$= \frac{8}{24}$$

$$= \frac{1}{3}$$

Lila had $\frac{1}{3}$ gal left over.

- d) Lila decided to make more baked goods for the bake sale. She used $\frac{1}{8}$ lb less flour to make bread than to make cookies. She used $\frac{1}{4}$ lb more flour to make cookies than to make brownies. If she used $\frac{1}{2}$ lb of flour to make the bread, how much flour did she use to make the brownies? Explain your answer using a diagram, numbers and words.



Lila used $\frac{3}{8}$ lb to make the brownies, $\frac{1}{8}$ less than $\frac{1}{2}$ lb.

$$\frac{1}{2} - \frac{1}{8} = \frac{4}{8} - \frac{1}{8} = \frac{3}{8}$$